



to look up to =
to look down on =



Climate changes

LAVINIA JUSTINIA DUMITRIU

Predată < >

Global warming and extreme weather events

- Global warming is the long-term heating of Earth's climate system observed since the pre-industrial period (between 1850 and 1900) due to human activities, primarily fossil fuel burning, which increases heat-trapping greenhouse gas levels in Earth's atmosphere.
- Extreme weather is another effect of global warming. While experiencing some of the hottest summers on record, much of the United States has also been experiencing colder-than-normal winters.
- Global warming may also lead to extreme weather other than cold or heat extremes. For example, hurricane formations will change.
- "Since the most damage by far comes from the most intense hurricanes — such as typhoon Halyan in the Philippines in 2013 — this means that hurricanes could become overall more destructive," said Sobel, a Columbia University professor in the departments of Earth and Environmental Sciences



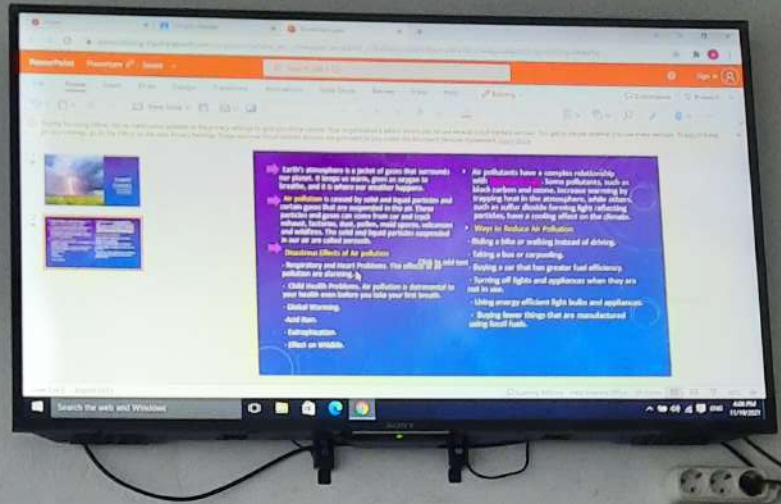
Fișiere

Predată pe 19 noi
Vedeți istoricul

global w

Comentarii

Adăugați



to look up to =
to look down on =



Climate changes

EDIC BUMBABU

Global warming

Cause 1: Burning fossil fuels

People burn fossil fuels to generate electricity and energy. For example, burning oil and gasoline is a source of energy to power vehicles. Burning wood provides heat and even allows you to cook food. These processes generate combustion reactions that release gaseous molecules into the atmosphere; carbon dioxide, the excess of which generates global warming. The more matter it burns, the higher the proportion of greenhouse gases emitted.

to look up to =
to look down on



Deforestation

Causes

Farming, grazing of livestock, mining, and drilling combined account for more than half of all deforestation. Forestry practices, wildfires and, in small part, urbanization account for the rest.

Consequences

Removing trees deprives the forest of portions of its canopy, which blocks the sun's rays during the day and retains heat at night. That disruption leads to more extreme temperature swings that can be harmful to plants and animals.

Solutions

Protect the forests and trees which are still present, plant new trees, regenerate the trees which were once present.

Fișiere
Predată pe 19
Vedeți istoricul
defore
Comentarii
Adăugați